

NURSERY SHOPPING
METRO HORT, NOV. 2018



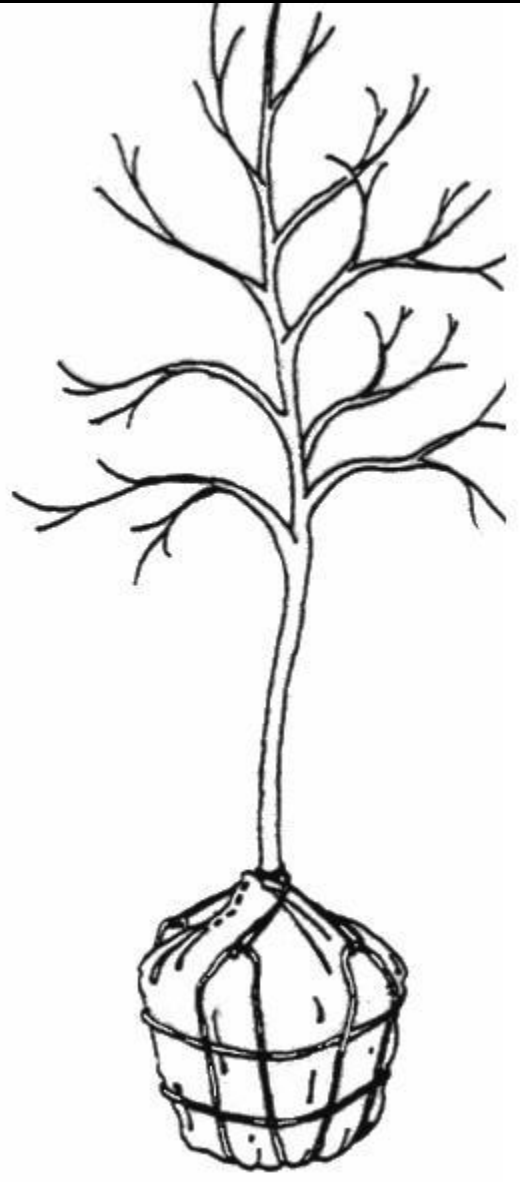
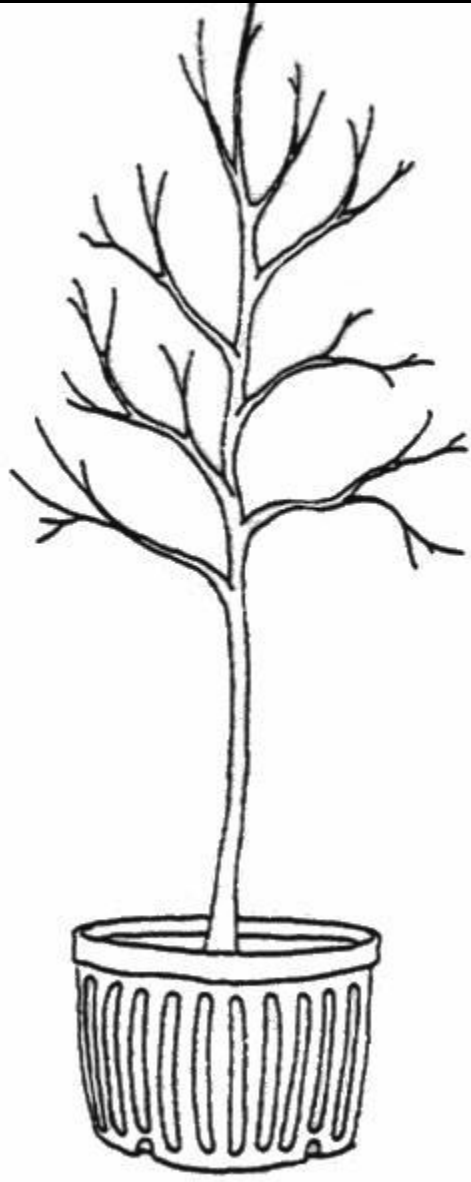
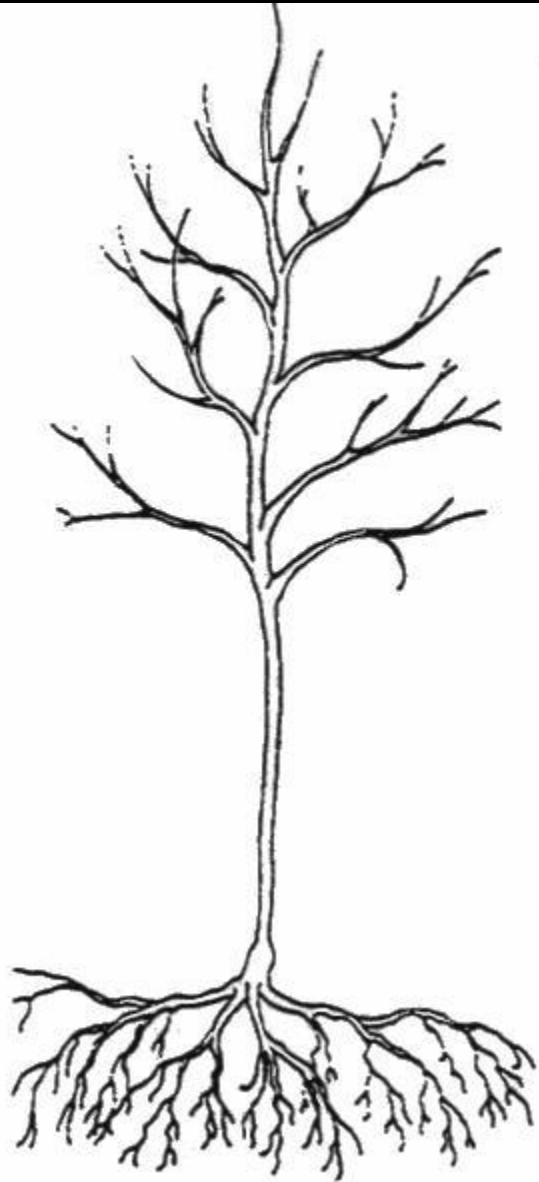
SHOPPING FOR
WOODY PLANTS



SECRETS TO SUCCESS

- BUY & PLANT AS SMALL AS POSSIBLE
 - BUY THE BEST, WELL-GROWN PLANTS YOU CAN FIND
 - DON'T LET PLANTS DRY OUT
 - ROOT PRUNE AND WATER AT PLANTING TIME
 - PLANT AS DENSE AS POSSIBLE WHEN POSSIBLE
 - ONLY PRUNE WHAT IS ABSOLUTELY NECESSARY WHEN PLANTING
- * * HAVE A SPECIES SPECIFIC IRRIGATION PLAN





CONTAINER GROWN

WEIGHT

Light to moderate

15 GL pot about 50-70lbs

1" caliper tree: 5GL pot

2" tree: 20GL

SURVIVAL WITH IRRIGATION

Good – Excellent

Must have irrigation after
planting and longer in most
cases









B&B

WEIGHT: Heavy

2" Caliper: 300lbs

3.5"-4": 800-1200lbs

SURVIVAL RATE WITH IRRIGATION

Root pruned: Excellent

Not root pruned: Fair – good

Less irrigation needed after the
plant is established





WHAT TO LOOK FOR ?

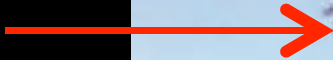
1,3,2 RNS SYSTEM™



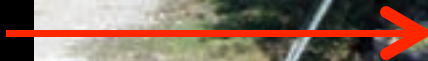
1. TOP 1/3



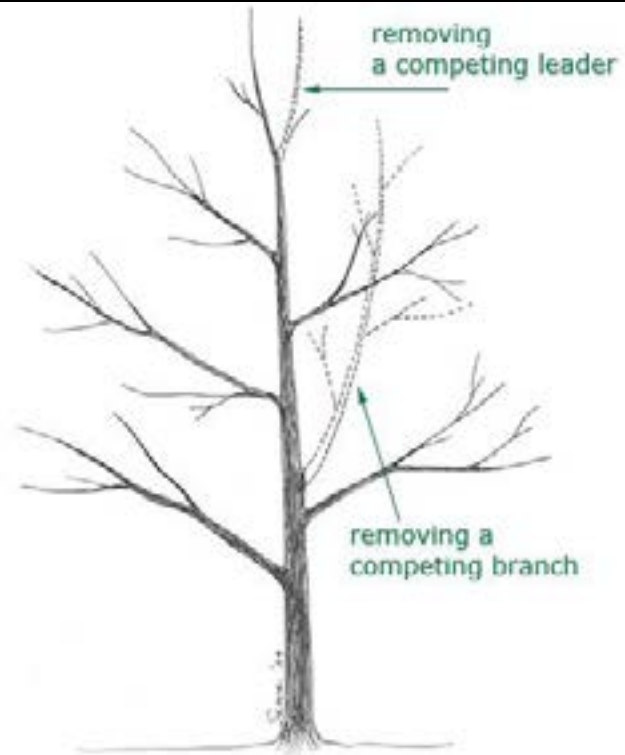
3. CENTER



2. ROOT COLLAR,
ROOT DEFECTS
& ROOT SIZE



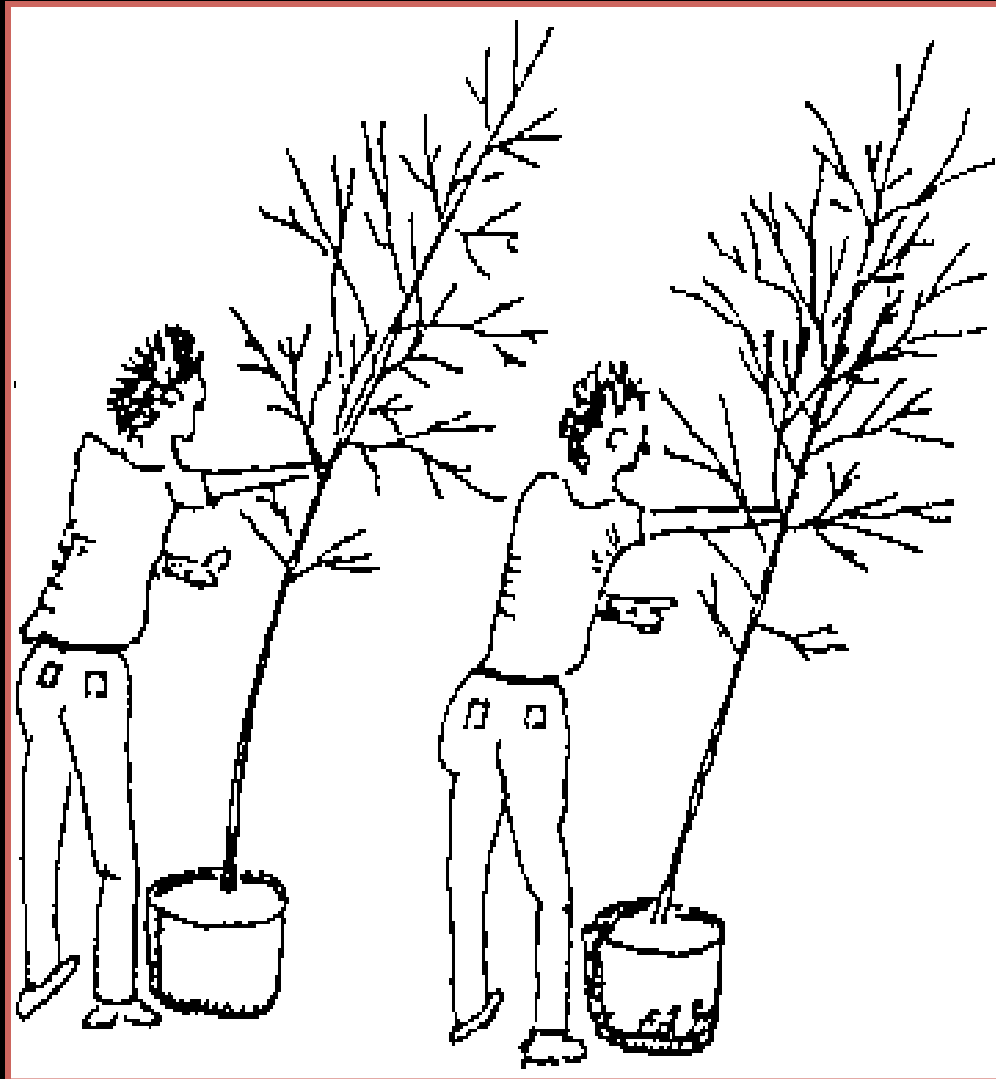






Quick test for root quality

Good
Quality



Poor
Quality

Trunk bends

Trunk does
not bend





Trunk Flare





Girdling Roots







BIOTIC AND ABIOTIC
DAMAGE





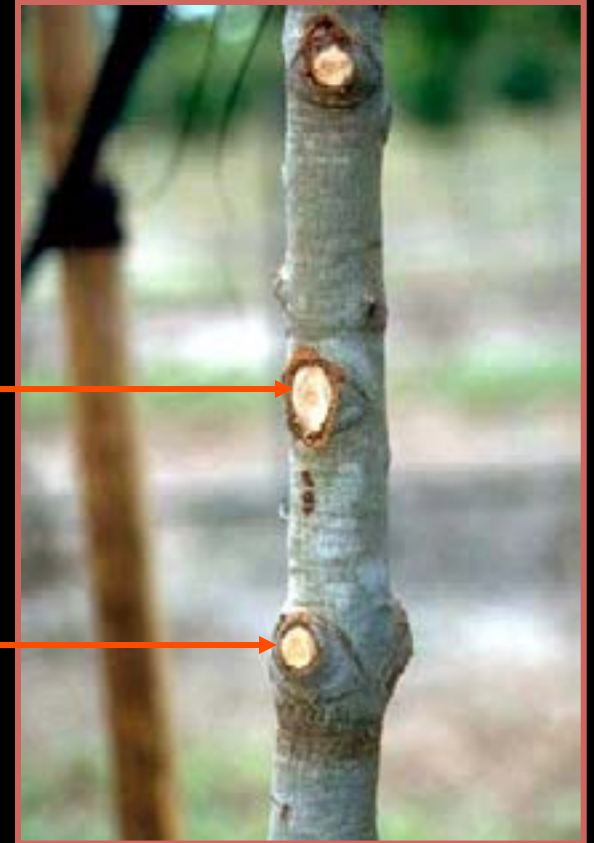




Quality of old pruning cuts



Flush
cut



Good cut



Callus forming only around sides of
flush cut. Branch collar no longer
present.

PLANTING





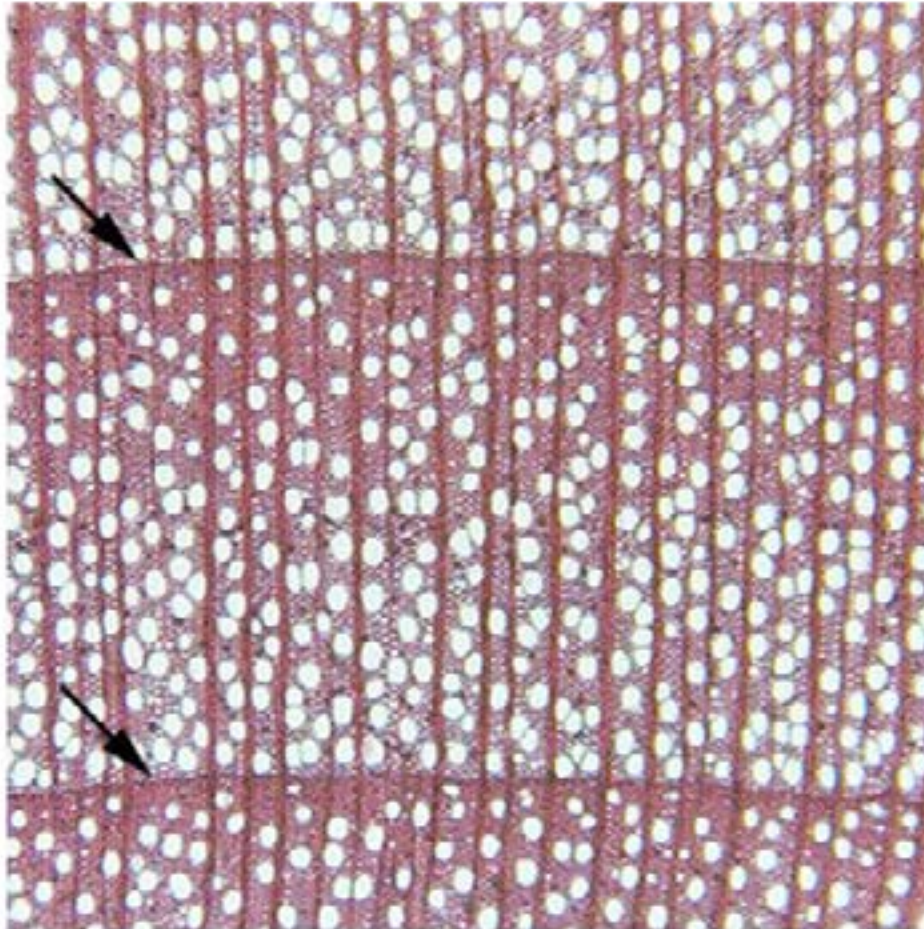


WATERING





DIFFUSE POROUS VS. RING POROUS



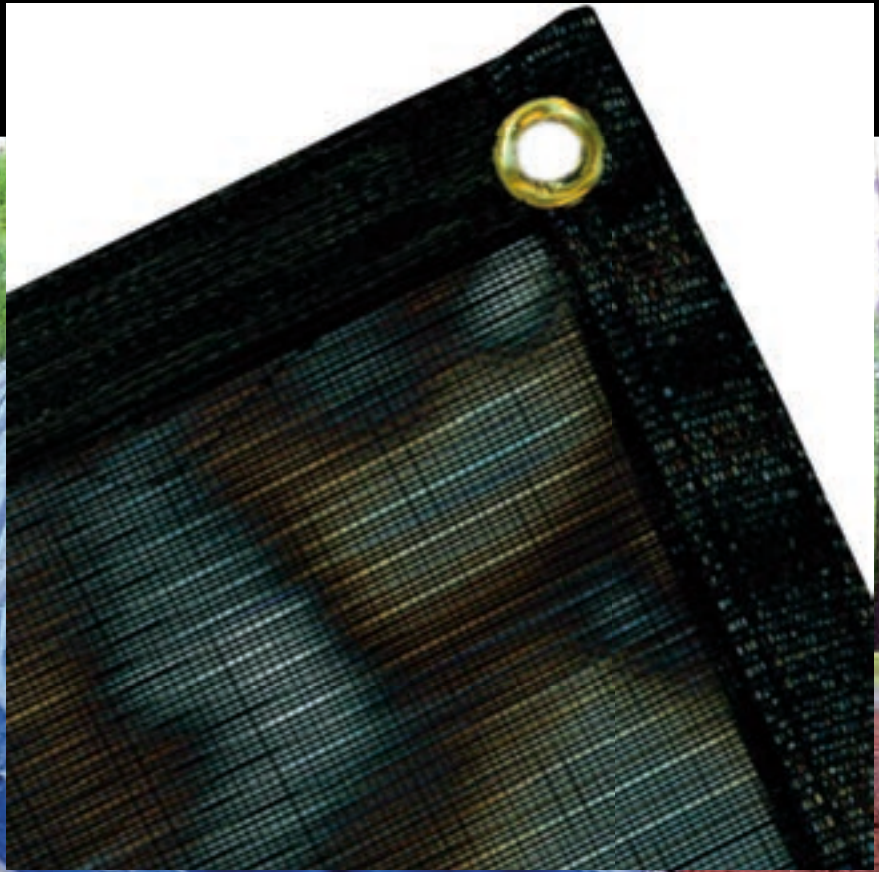
MAPLE



OAK

00510.47 M





SECRETS TO SUCCESS

- BUY & PLANT AS SMALL AS POSSIBLE
 - BUY THE BEST, WELL-GROWN PLANTS YOU CAN FIND
 - DON'T LET PLANTS DRY OUT
 - ROOT PRUNE AND WATER AT PLANTING TIME
 - PLANT AS DENSE AS POSSIBLE WHEN POSSIBLE
 - ONLY PRUNE WHAT IS ABSOLUTELY NECESSARY WHEN PLANTING
- * * HAVE A SPECIES SPECIFIC IRRIGATION PLAN



A close-up photograph of several vibrant red maple leaves. The leaves are the central focus, showing detailed vein patterns and several irregular holes that have been eaten. The background is a solid black, which makes the bright red color of the leaves stand out. The lighting is soft, highlighting the texture of the leaf surfaces.

Thank you.
chrisroddick@bbg.org