



ATTRACTING BIRDS TO PROPERTIES LARGE AND SMALL

Stephen Kress

March 11, 2020





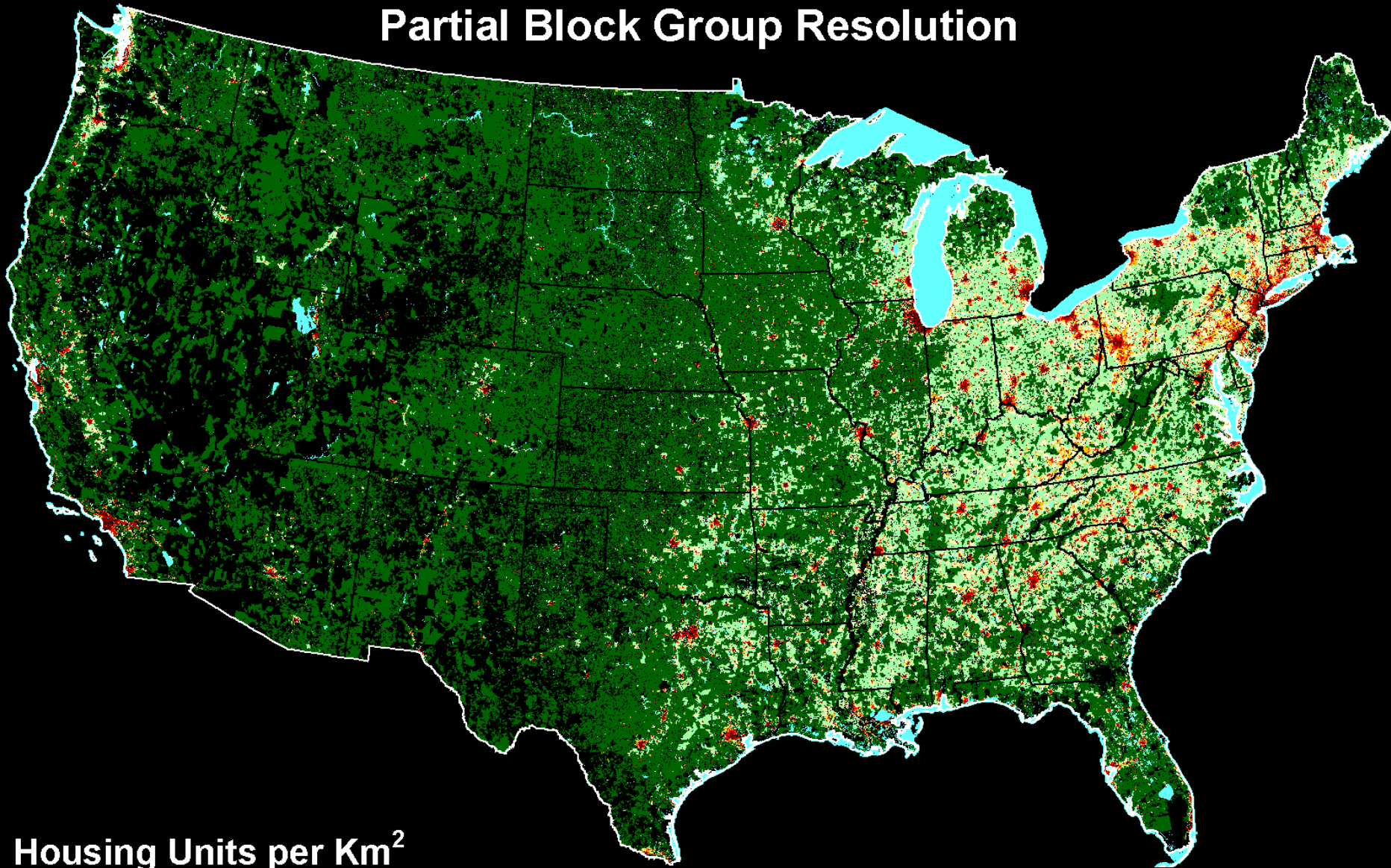






Housing Density 1940

Partial Block Group Resolution

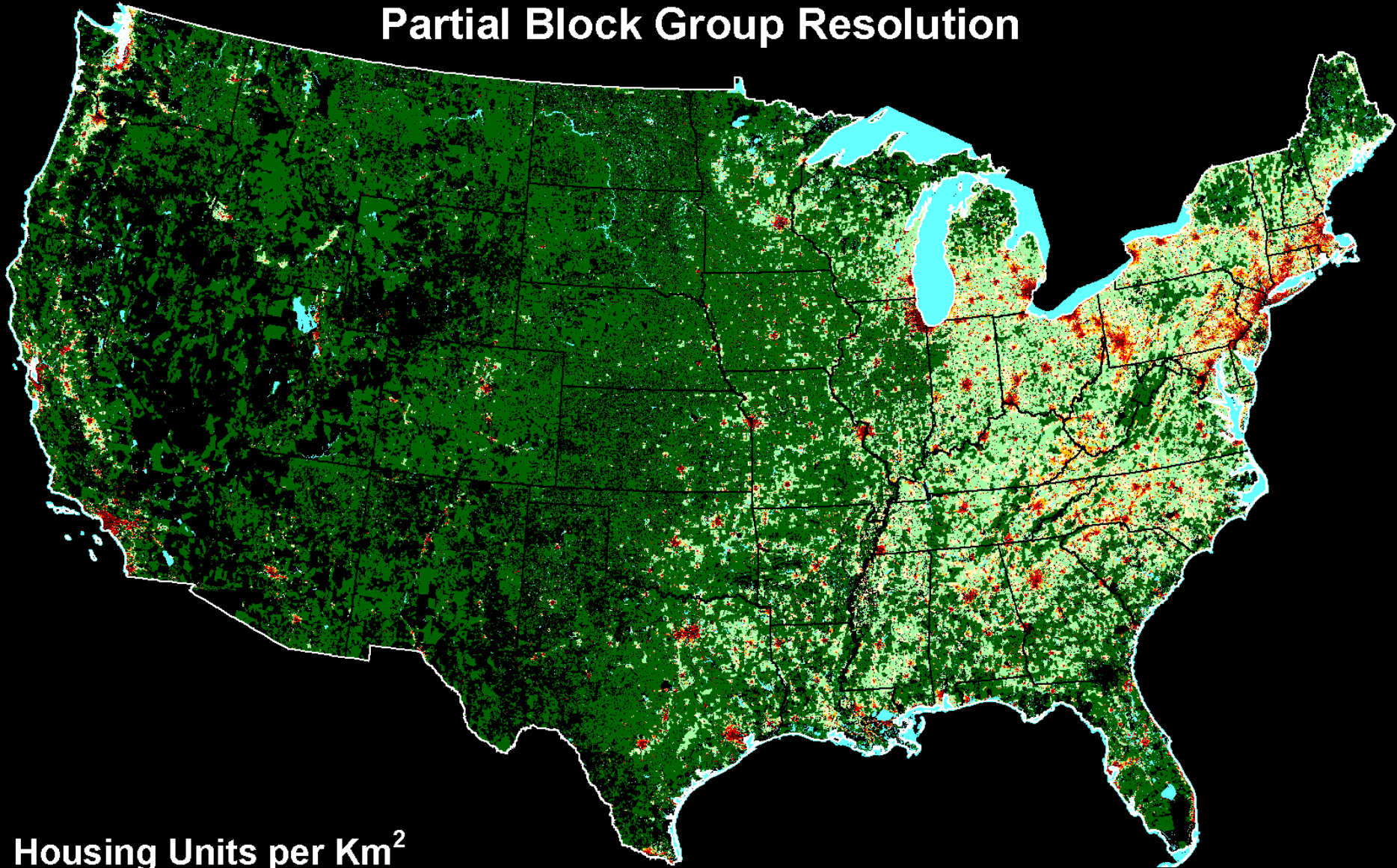


Housing Units per Km²



Housing Density 1950

Partial Block Group Resolution

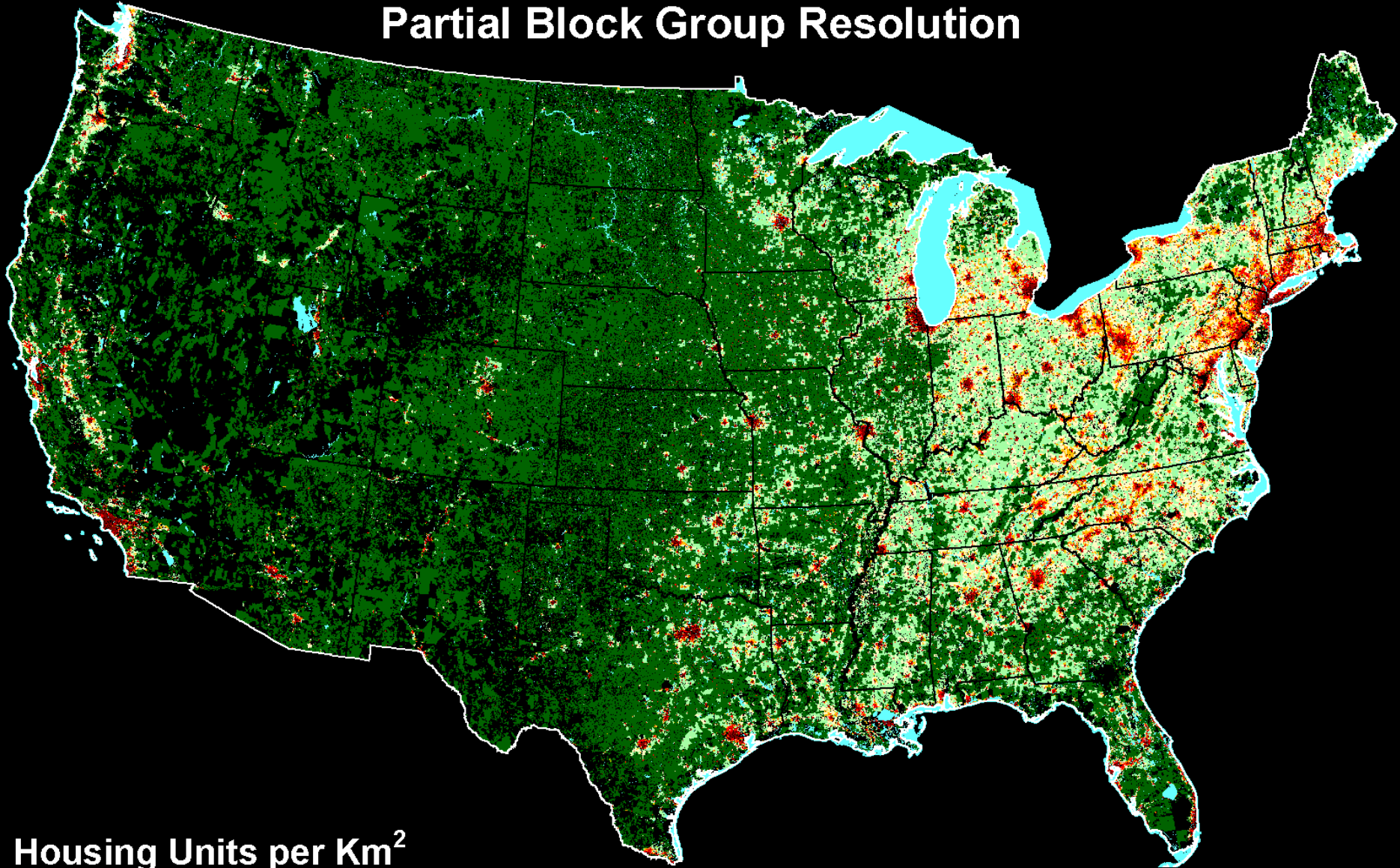


Housing Units per Km²



Housing Density 1960

Partial Block Group Resolution

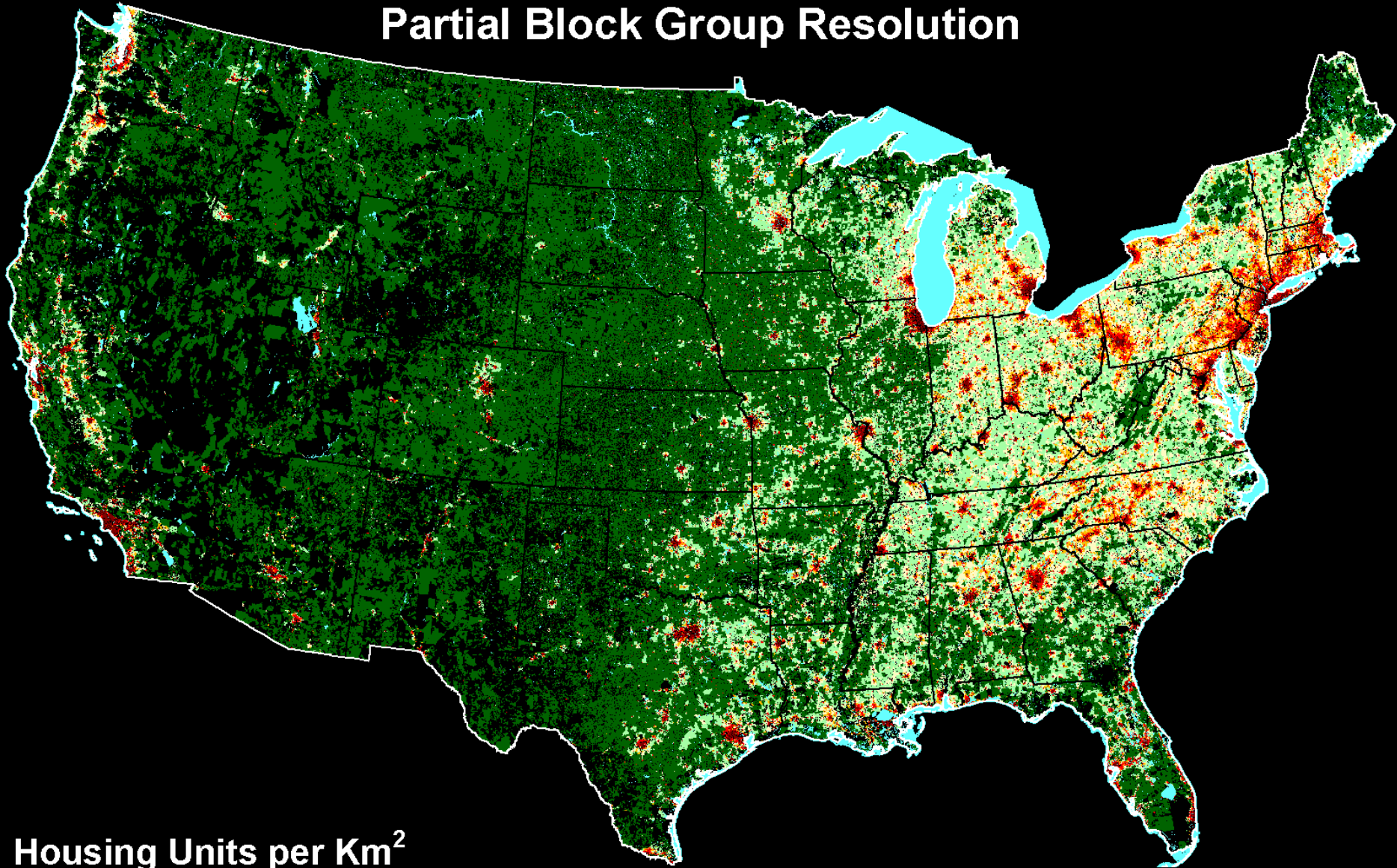


Housing Units per Km²

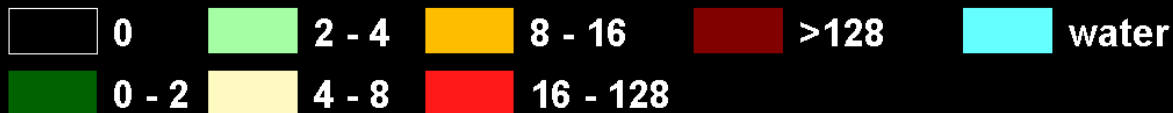


Housing Density 1970

Partial Block Group Resolution

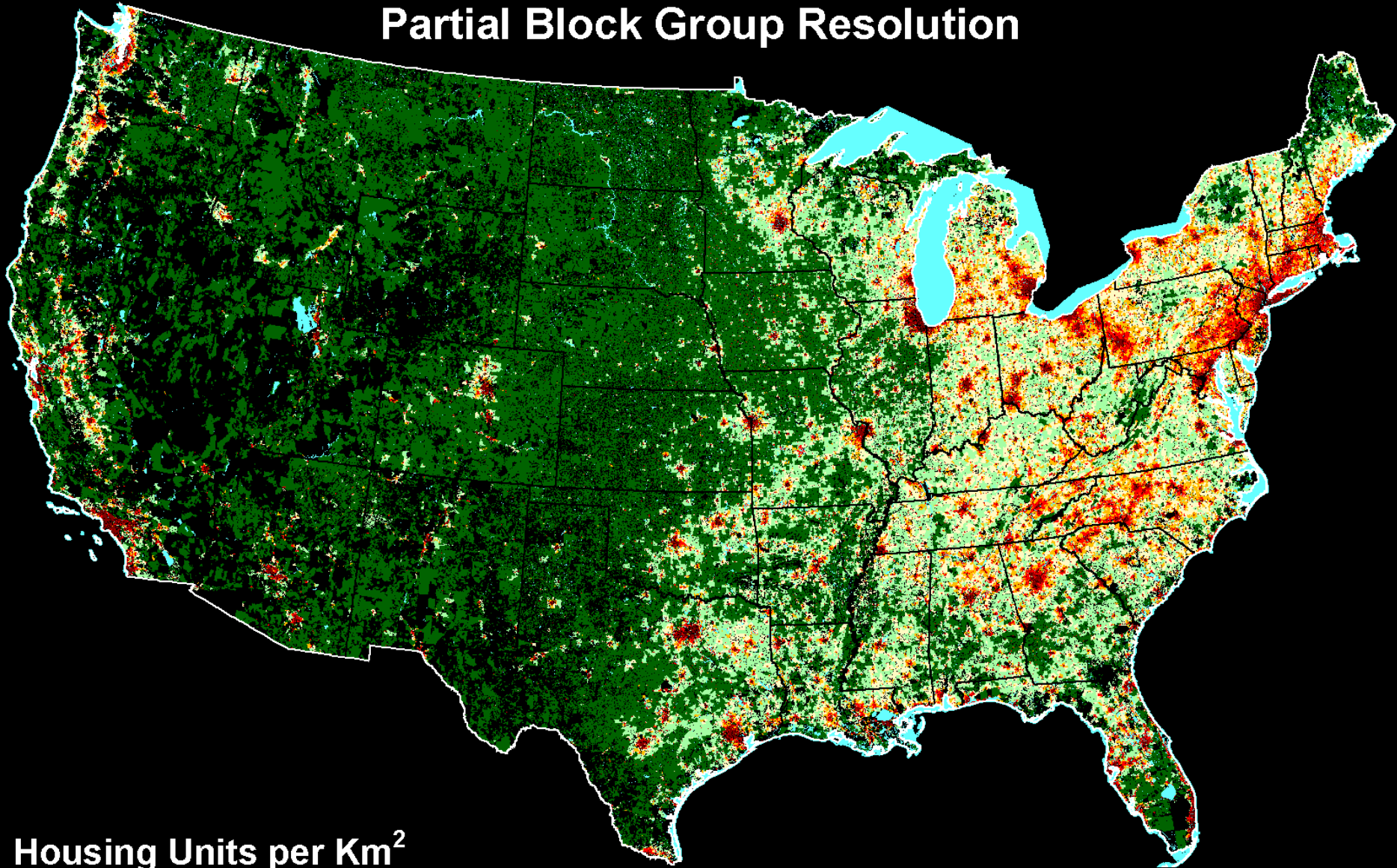


Housing Units per Km²

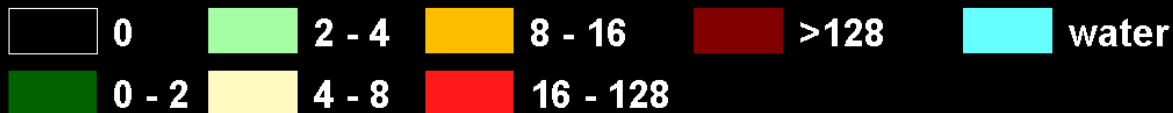


Housing Density 1980

Partial Block Group Resolution

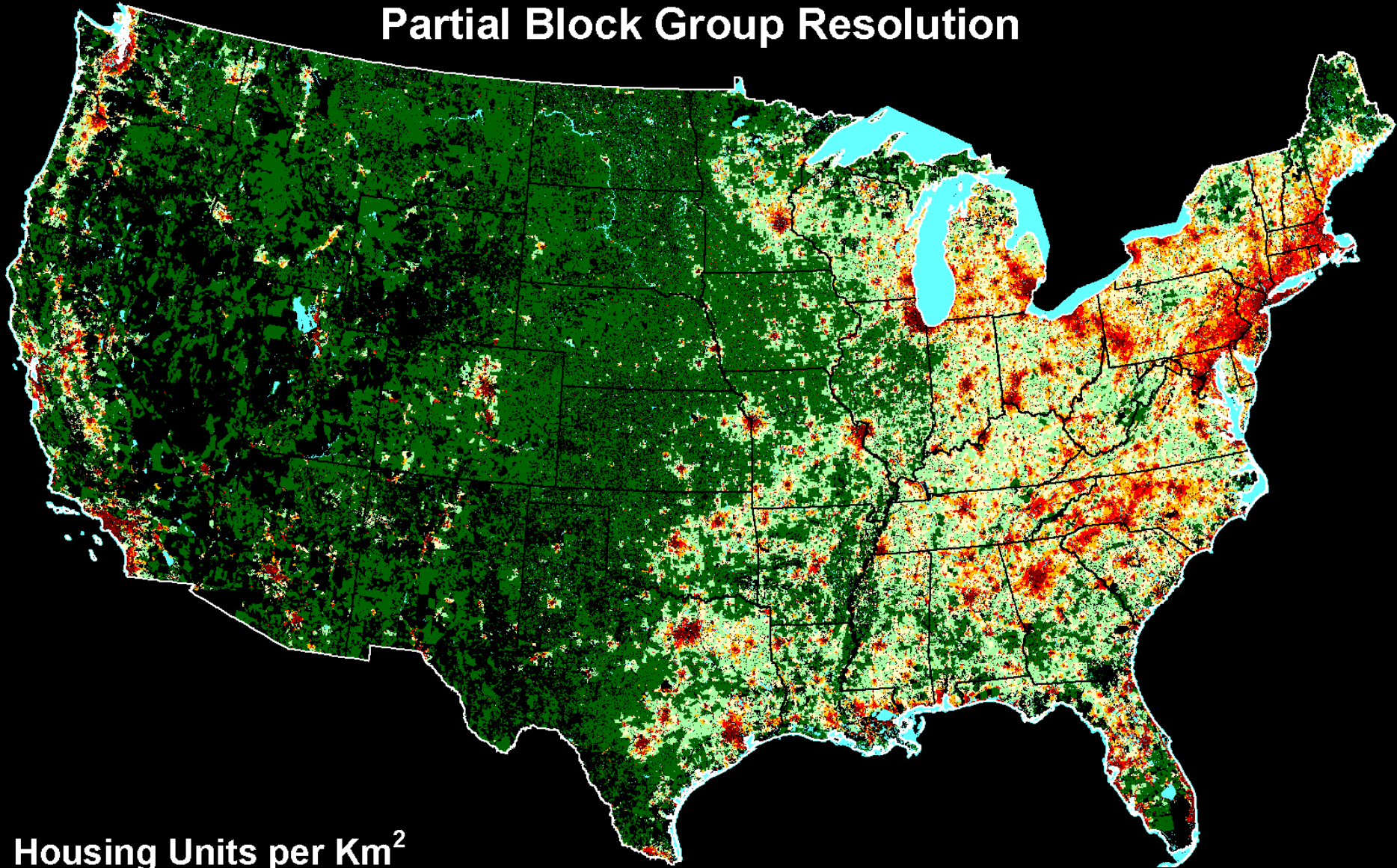


Housing Units per Km²



Housing Density 1990

Partial Block Group Resolution

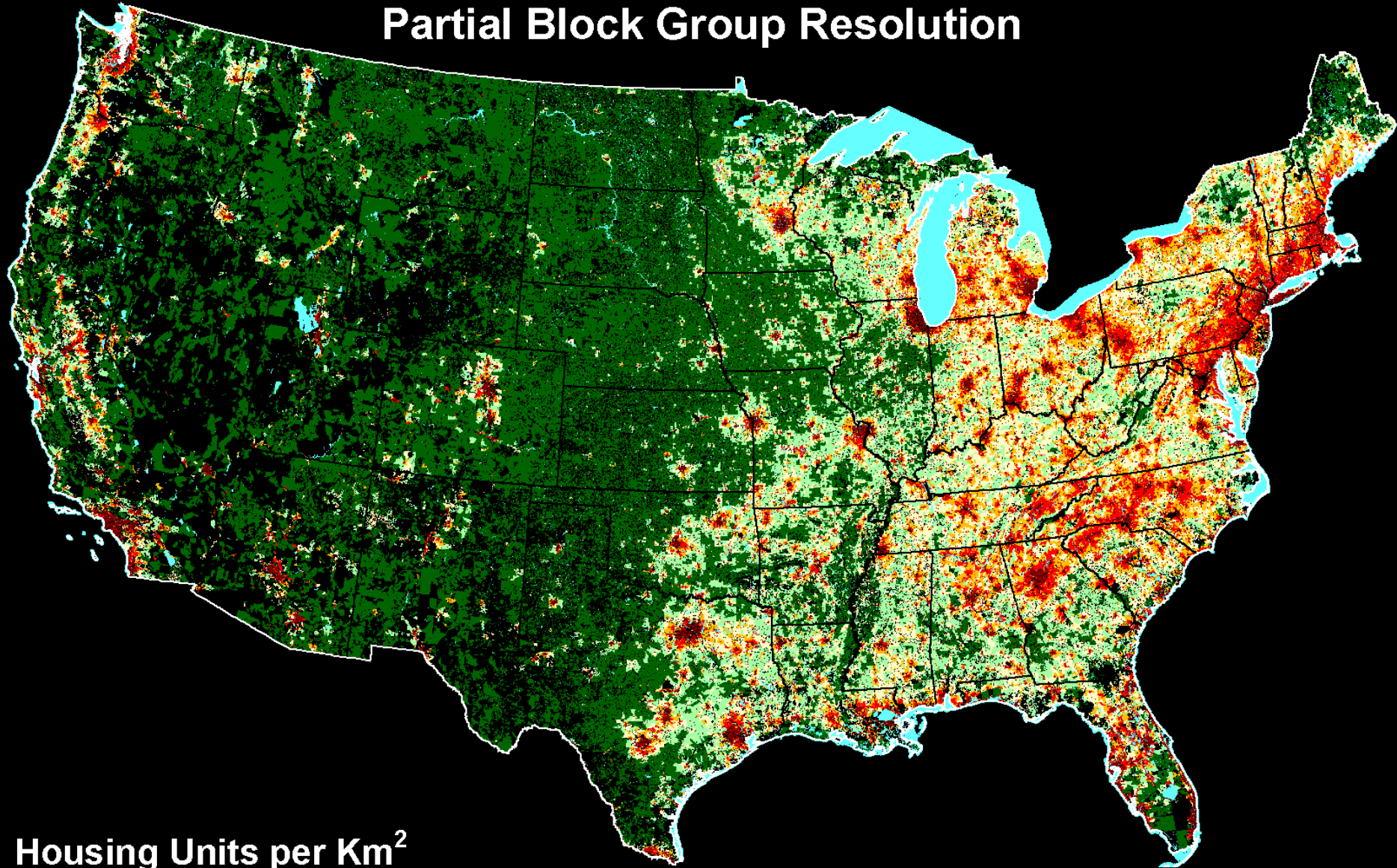


Housing Units per Km²



Housing Density 2000

Partial Block Group Resolution

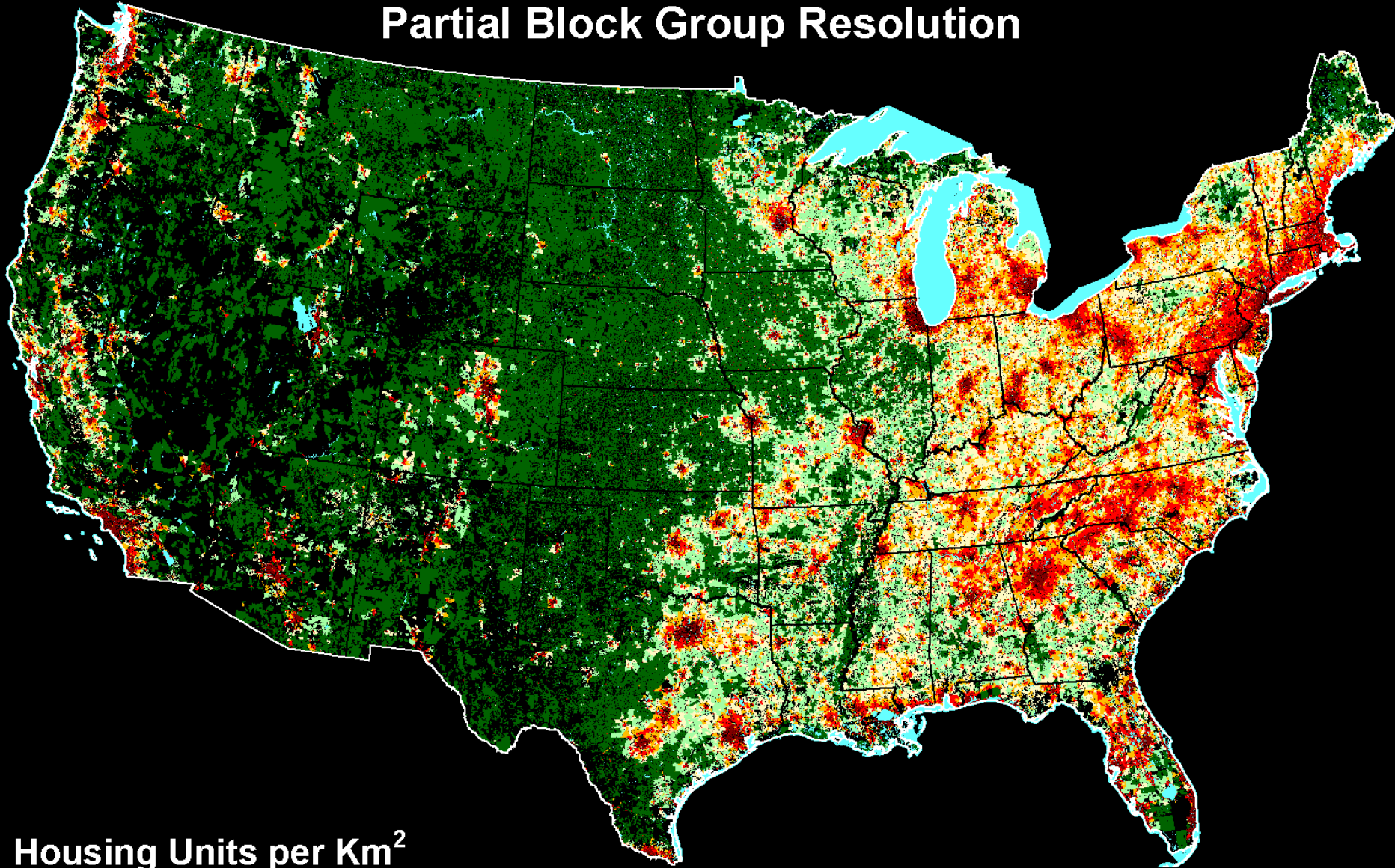


Housing Units per Km²



Projected Housing Density 2010

Partial Block Group Resolution

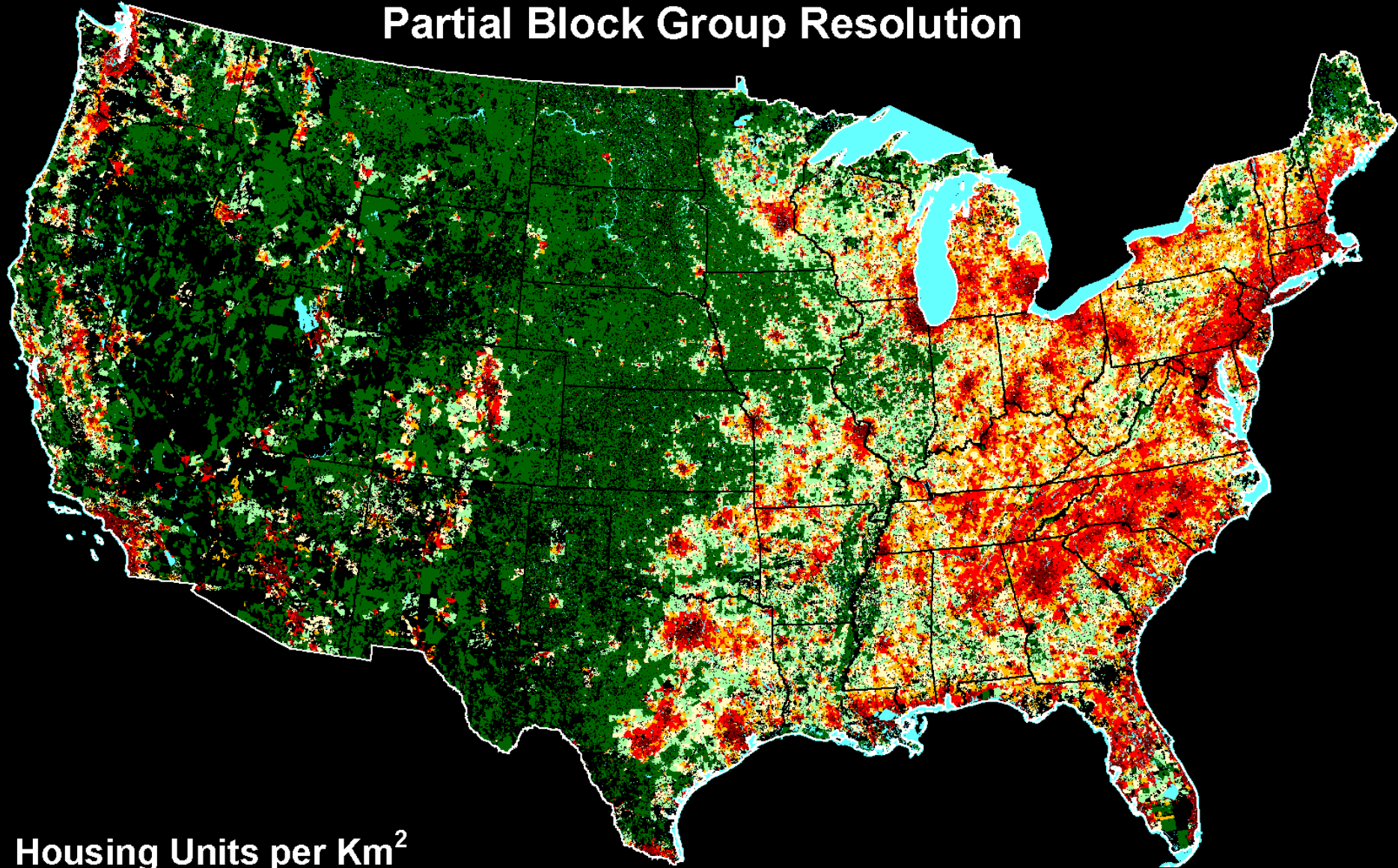


Housing Units per Km²



Projected Housing Density 2030

Partial Block Group Resolution



Housing Units per Km²













MEADOW
TRAIL →







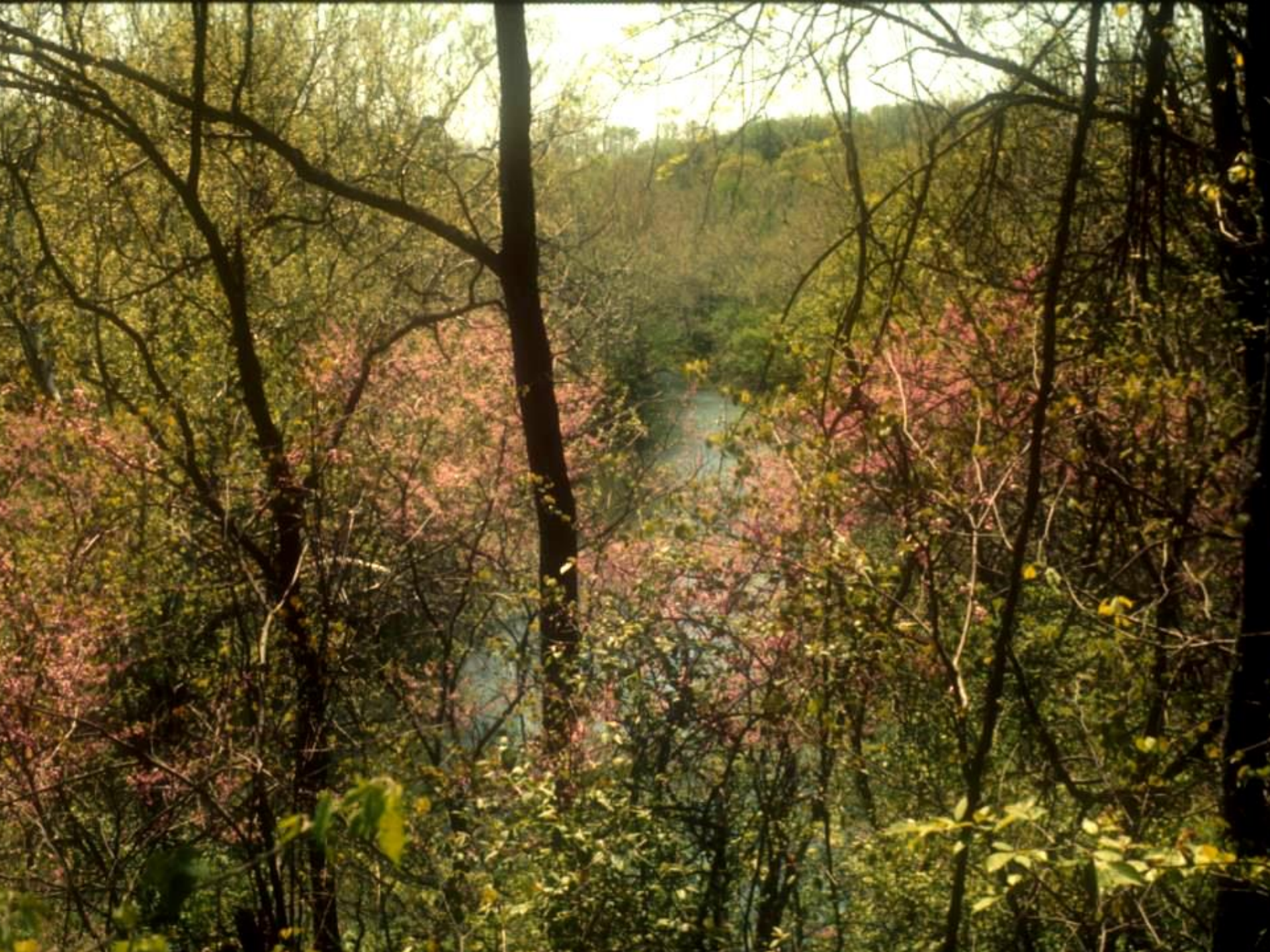






































Audubon Plants for Birds

audubon.org/plantsforbirds



















































Creating
Natural Habitats
for Properties
Large and Small

The Audubon Society Guide to Attracting Birds

SECOND EDITION



Stephen W. Kress

Audubon®



In Association with the
CORNELL LAB of
ORNITHOLOGY















SOUTH →

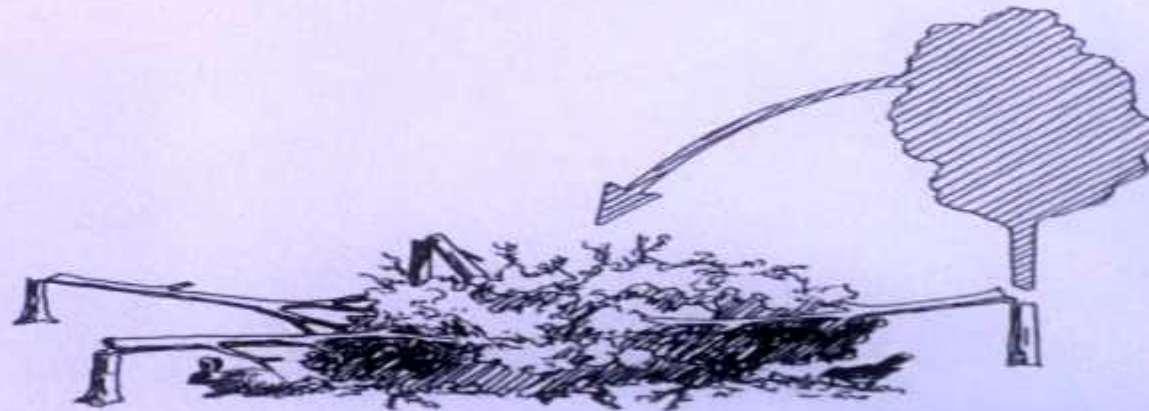
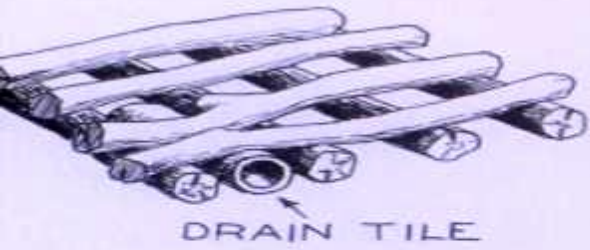
BRAMBLES

STEEP
ROCK
FALL

LEAVES & LOG



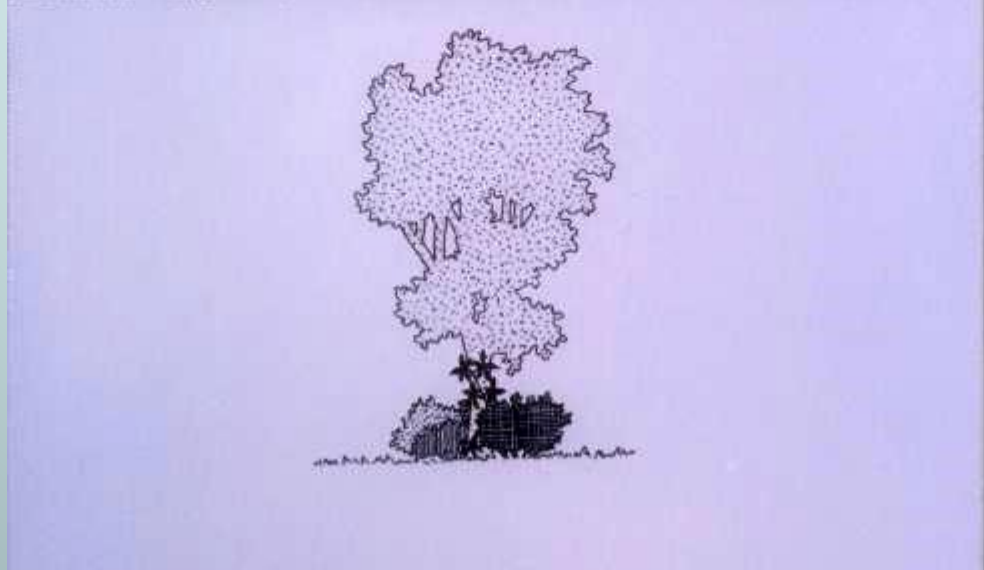
BASES FOR BRUSH PILES



































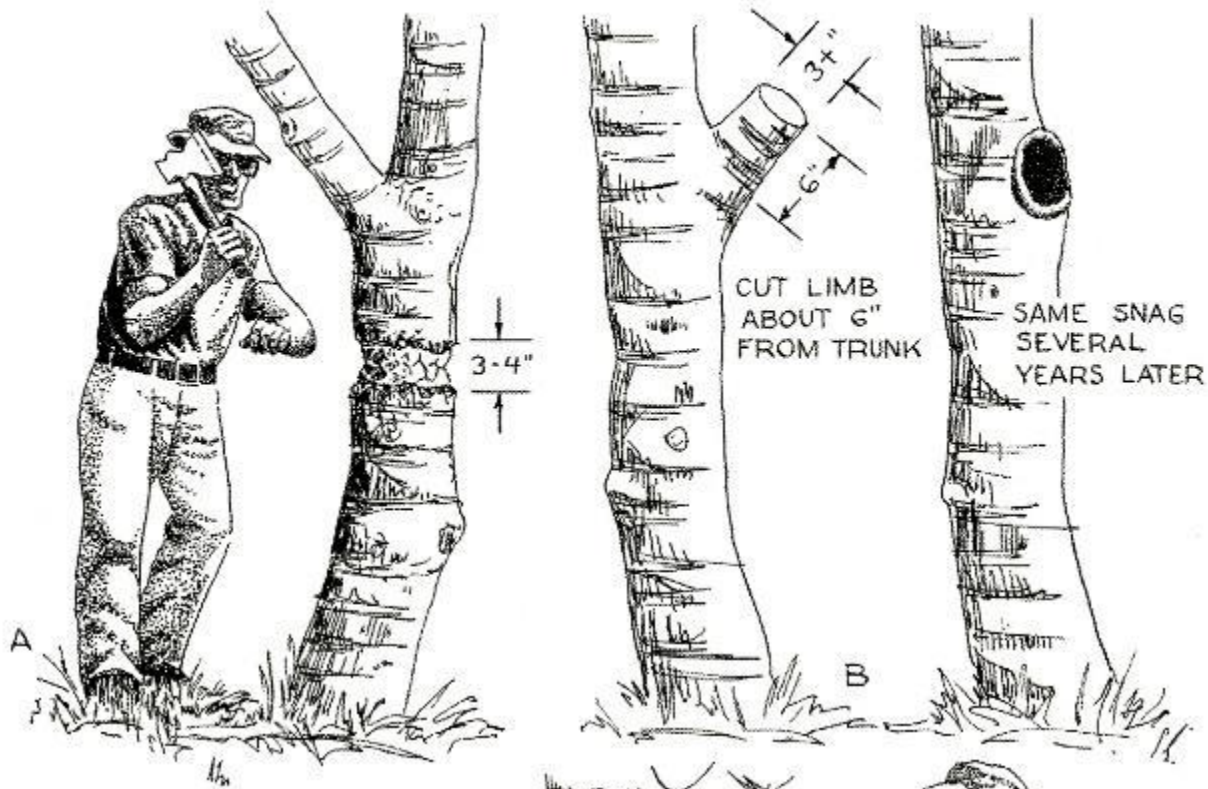












DRILLED HOLES SHOULD POINT 10° BELOW THE HORIZONTAL TO SPEED CAVITY FORMATION, INOCULATE WITH ROTTING WOOD.























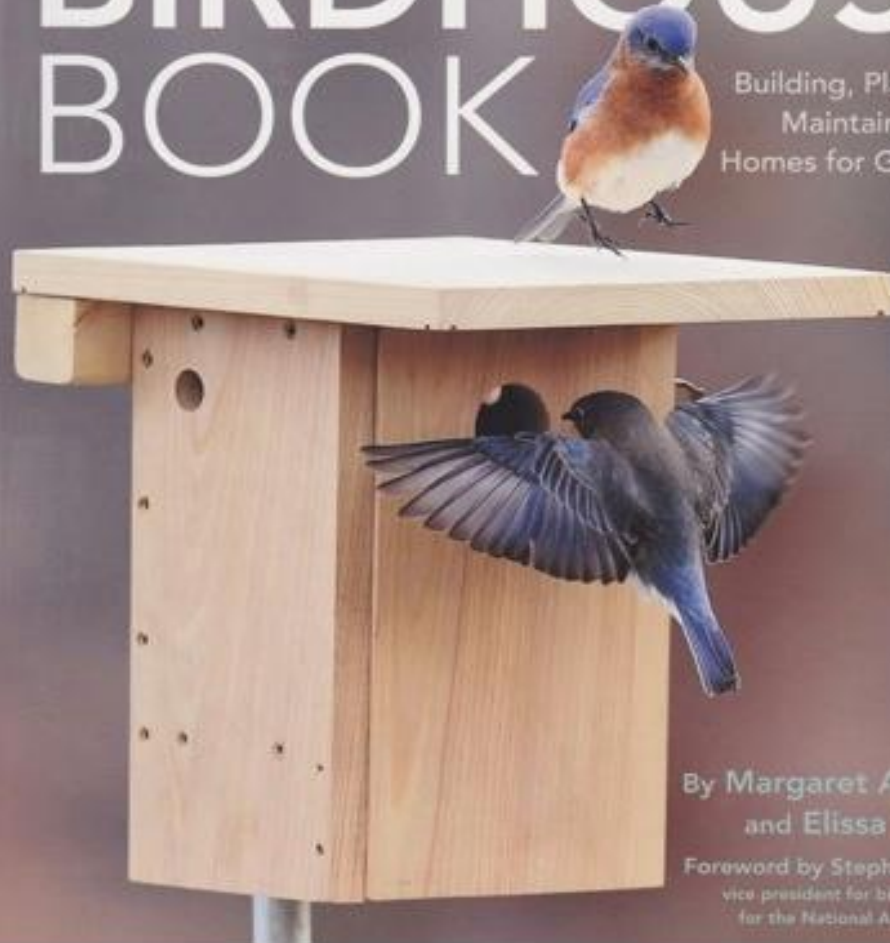




Audubon®

BIRDHOUSE BOOK

Building, Placing, and
Maintaining Great
Homes for Great Birds



By Margaret A. Barker
and Elissa Wolfson

Foreword by Stephen W. Kress
vice president for bird conservation
for the National Audubon Society









GARDEN
MADE FOR
BIRDS



Small informational sign at the bottom center of the window frame.

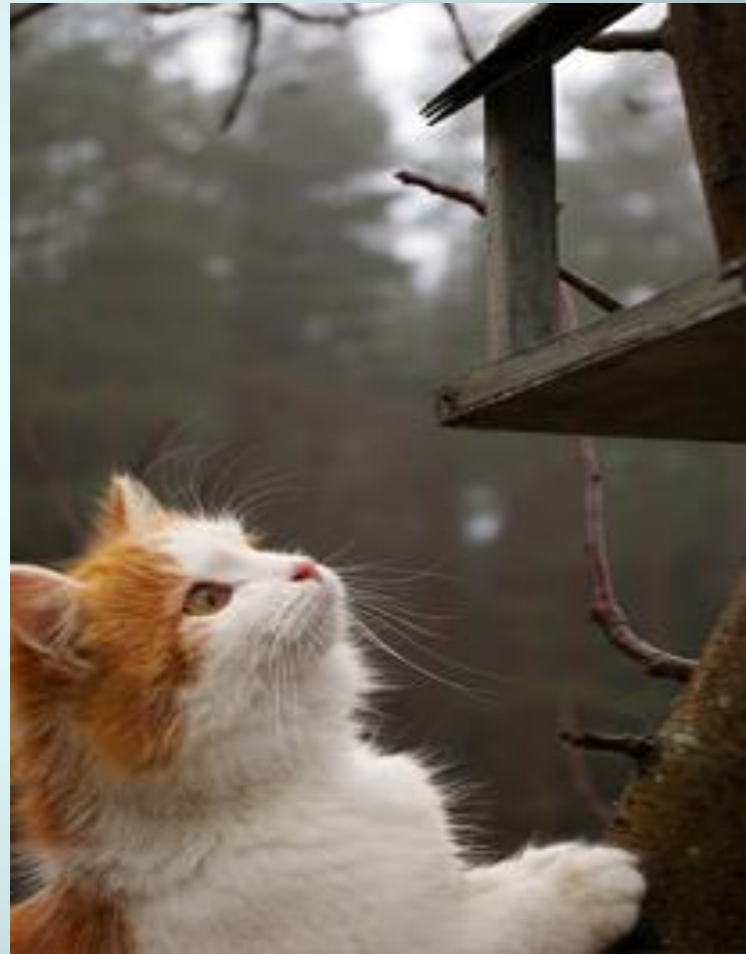






Cats outdoors

- ▣ Outdoor cats in the United States kill about 1.4-3.7 billion birds each year.









GROUND

Certified Bird Friendly[®]
Shade Grown Organic Coffee



**BIRDS &
BEANS**

The Good Coffee



Be Certain
Buy Certified[™]

www.birdsandbeans.com



9915
12oz
\$12.49

GROUND

Certified Bird Friendly[®]
Shade Grown Organic Coffee



**BIRDS &
BEANS**

The Good Coffee

wood thrush

Light Roast
Delicate yet Full-Flavored



Artisan roasted
in New England
Net Wt 12oz

Be Certain
Buy Certified[™]

www.birdsandbeans.com



GROUND

Certified Bird Friendly[®]
Shade Grown Organic Coffee



**BIRDS &
BEANS**

The Good Coffee

chestnut-sided warbler

Medium Roast
Rich and Clean

Artisan roasted







