



Central Park Arsenal  
Thursday, March 21, 2024

# WE'RE GROWING:

Voices from the Field

---



We're Growing: Voices from the Field



**ROSE-MARIE MINER**  
***OUR TEMENOS***



We're Growing: Voices from the Field



**JUAN CORREA**  
***BLUE DAHLIA***





We're Growing: Voices from the Field



**JESSICA KAPLAN**  
***RIVERSIDE PARK***





We're Growing: Voices from the Field



**WILLIAM CURTIS-BEY**  
***GREEN BEY GARDENS***



We're Growing: Voices from the Field



**SARA EVENS**

***GREEN-WOOD CEMETERY***



We're Growing: Voices from the Field



**ROSE-MARIE MINER**  
***OUR TEMENOS***





## We're Growing: Voices from the Field

Rosemarie Miner  
*@Ourtemenos*

### PRINCIPLES OF PLANT SELECTION

- **FOSTER ECOLOGICAL RESILIENCE**
- **INCREASE BIODIVERSITY**
- **BUILD INTIMACY**

### SUSTAINABLE OPERATIONS

- **LIFE CYCLE COST**
- **REDUCE TURNOVER**
- **LONGEVITY WITHOUT MAINTENANCE**

**@OURTEMENOS** | [WWW.OURTEMENOS.ORG](http://WWW.OURTEMENOS.ORG)







## We're Growing: Voices from the Field

*Cimicifuga racemosa*, Black Cohosh  
Rosemarie Miner







## We're Growing: Voices from the Field

*Calycanthus floridus*, Sweetshrub  
Rosemarie Miner







## We're Growing: Voices from the Field

*Scutellaria incana*, Hoary skullcap  
Rosemarie Miner







We're Growing: Voices from the Field



**JUAN CORREA**  
***BLUE DAHLIA***



## We're Growing: Voices from the Field

### *Rhododendron* 'Yaku Princess', Yaku Princess Rhododendron Juan Correa

- Ericaceae
- Hybrid cross of *Rhododendron degronianum* 'King Tut' and *Rhododendron yakushimanum* 'Koichiro Wada'
- 3-4ft In height
- Dense multi-stemmed evergreen shrub
- Dark green foliage coated with indumentum
- Attractive white-pink trumpet shaped flowers
- Prefers well-drained acidic soil
- Prefers full sun to partial shade
- Perfect for mass plantings, containers, woodland gardens







We're Growing: Voices from the Field

*Rhododendron* 'Yaku Princess'  
Yaku Princess Rhododendron  
Juan Correa







## We're Growing: Voices from the Field

*Hydrangea quercifolia*, Oakleaf Hydrangea  
Juan Correa

- Hydrangeaceae
- South-eastern native
- 3–12 feet tall
- Open crown growth
- Large clusters of cone shaped flowers
- Slight fragrance
- Full shade, with morning sun and afternoon shade
- Perfect for woodland, shaded, and natural gardens, and rooftop spaces
- Drought tolerant

### Fall/Winter interests

- Fall color
- Flowers
- Attractive orange bark







## We're Growing: Voices from the Field

*Hydrangea quercifolia*, Oakleaf Hydrangea  
Juan Correa







## We're Growing: Voices from the Field

*Paulownia tomentosa*

Empress Tree, Princess Tree, Royal Paulownia  
Juan Correa

- Paulowniaceae
- Native to Eastern Asia
- One of the fastest growing trees in the world!
- Named after Russian Princess Anna Paulowna
- Introduced to the US in the 1800's
- Single stem tree with an open crown habit
- Panicle inflorescence of fragrant lavender flowers
- Produces around 20 Million seeds per year!
- Lumber tree in Asia
- Problematic in the US, labeled as an invasive species (DO NOT PLANT!)

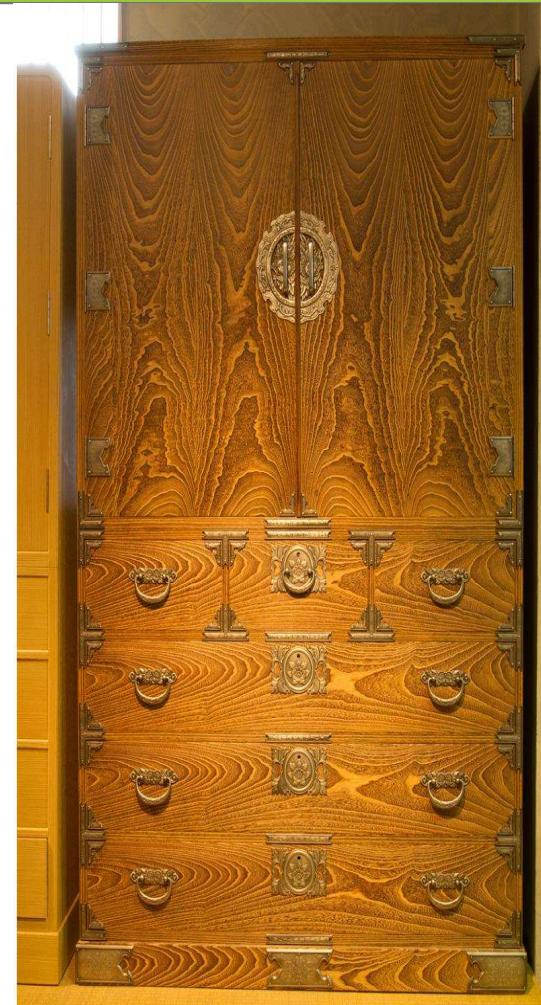






## We're Growing: Voices from the Field

*Paulownia tomentosa*  
Empress Tree, Princess Tree, Royal Paulownia  
Juan Correa







We're Growing: Voices from the Field



**JESSICA KAPLAN**  
***RIVERSIDE PARK***





## We're Growing: Voices from the Field

*Iris cristata*, Dwarf Crested Iris  
Jessica Kaplan







## We're Growing: Voices from the Field

*Zizia* spp. , Golden Alexanders  
Jessica Kaplan







## We're Growing: Voices from the Field

*Mertensia virginica*, Virginia Bluebells  
Jessica Kaplan





We're Growing: Voices from the Field



**WILLIAM CURTIS-BEY**  
***GREEN BEY GARDENS***





## We're Growing: Voices from the Field

***Sassafras albidum*, Sassafras**  
William Curtis-Bey, Green Bey Gardens







## We're Growing: Voices from the Field

***Gaultheria procumbens*, Wintergreen**  
William Curtis-Bey, Green Bey Gardens







## We're Growing: Voices from the Field

*Quercus ilicifolia*, Bear Oak  
William Curtis-Bey, Green Bey Gardens







We're Growing: Voices from the Field



**SARA EVENS**


***GREEN-WOOD CEMETERY***



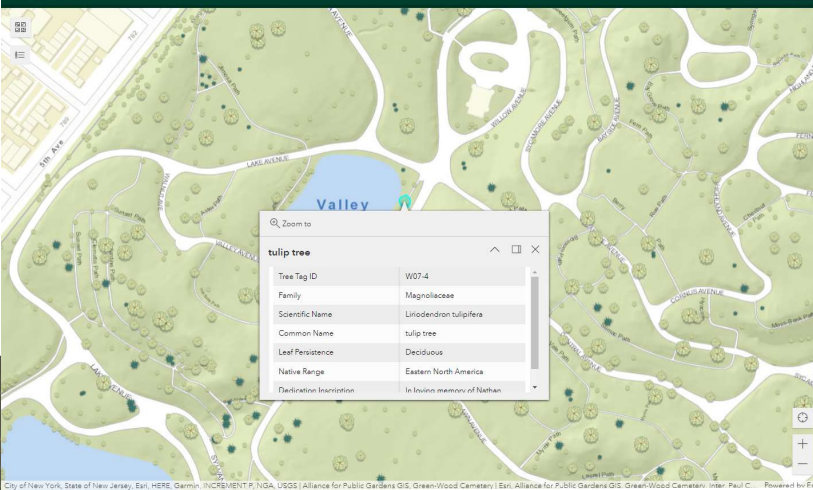


## We're Growing: Voices from the Field

**Sara Evans**  
The Green-Wood Cemetery

**TREE FINDER**

[Green-Wood Website](#)[E-Newsletter Sign-up](#)



tulip tree	
Tree Tag ID	W07-4
Family	Magnoliaceae
Scientific Name	Liriodendron tulipifera
Common Name	tulip tree
Leaf Persistence	Deciduous
Native Range	Eastern North America
Dedication Inscription	In loving memory of Nathan

[< Previous](#)[Next >](#)

### Advanced Plant Search

Customize your plant search using the filters to find exactly what you're looking for. By default, the filters are off. Click the toggle on the right side to activate!

> Family

- All -

Begin typing and select a family

> Genus

- All -

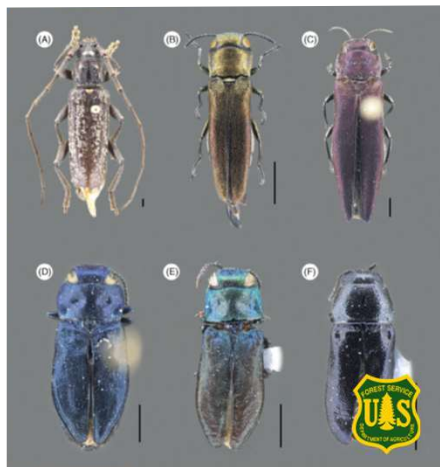
Begin typing and select a genus

> Species

- All -

Begin typing and select a species

> Cultivar







## We're Growing: Voices from the Field

**Sara Evans**  
The Green-Wood Cemetery

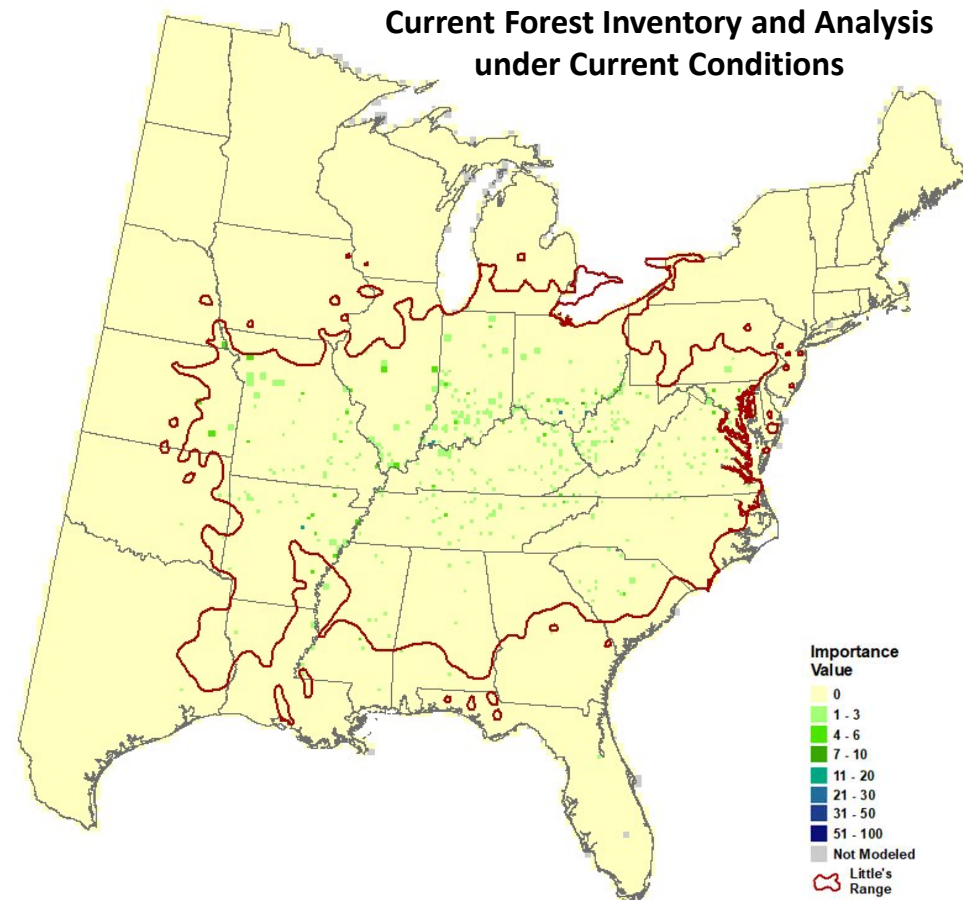






## We're Growing: Voices from the Field

*Asimina triloba*, Pawpaw  
Sara Evans



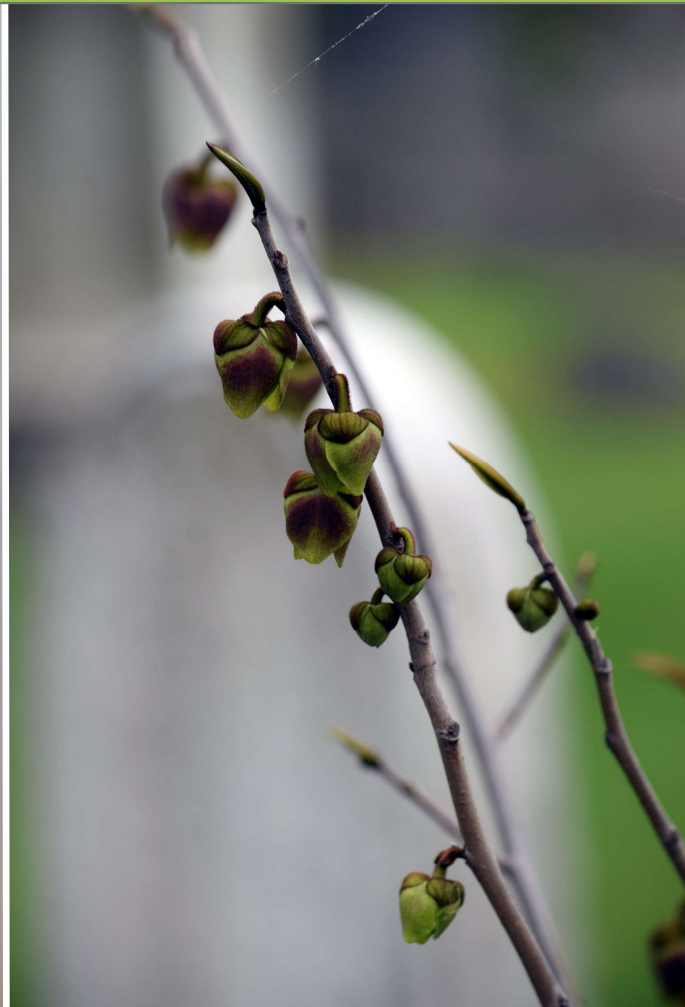
USFS Climate Change Atlas





## We're Growing: Voices from the Field

*Asimina triloba*, Pawpaw  
Sara Evans







## We're Growing: Voices from the Field

*Quercus virginiana*, Live Oak  
Sara Evans



JUNE 2018





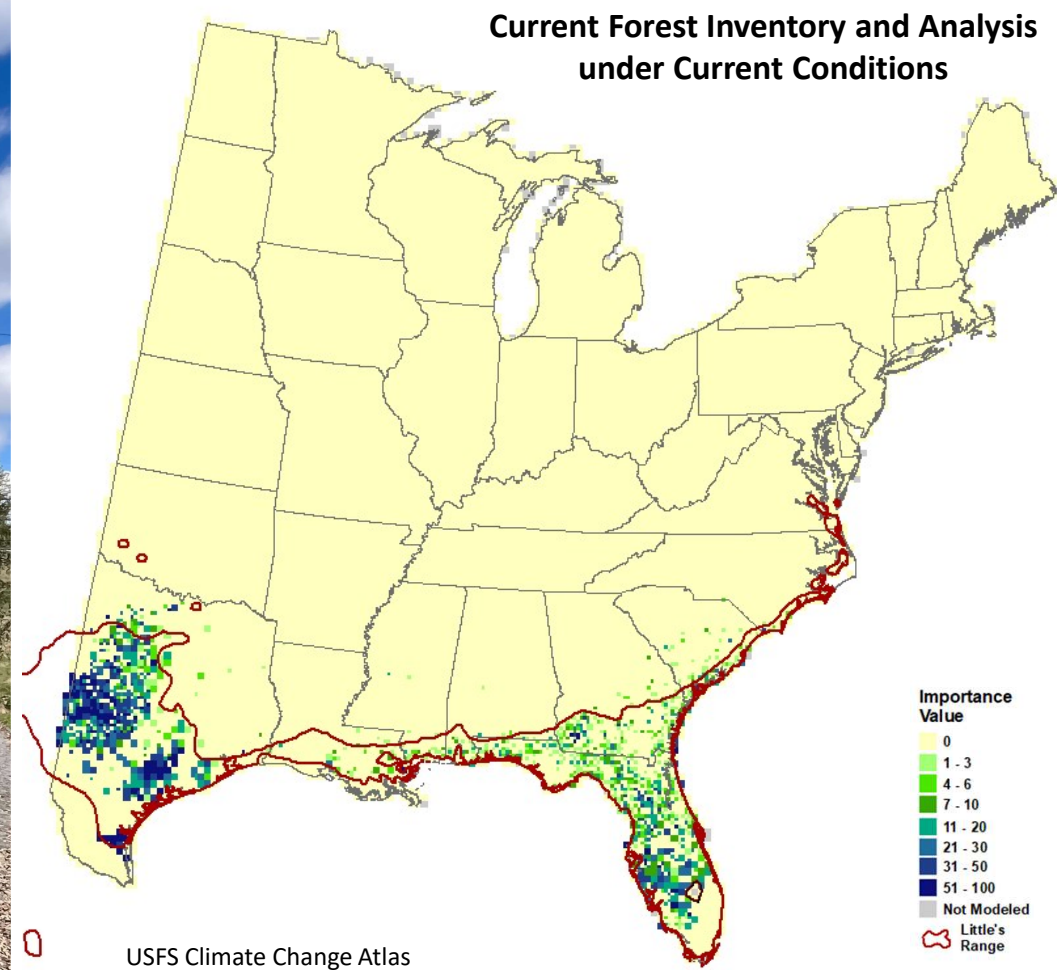


## We're Growing: Voices from the Field

*Quercus virginiana*, Live Oak  
Sara Evans



**MARCH 2024**







## We're Growing: Voices from the Field

*Quercus virginiana*, Live Oak  
Sara Evans



Kissimmee, Florida  
July 2022







## We're Growing: Voices from the Field

*Oenothera biennis*, Common Evening-Primrose  
Sara Evans



Image captured by Sarah Wells



**December 29, 2023**



Image captured by Matthew Wills